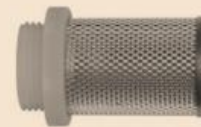
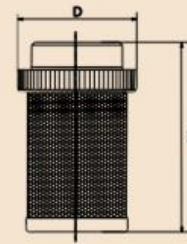


Filtergewebe  
Gewindematerial  
Betriebstemperatur

Edelstahl 1.4301  
Kunststoff  
-20 °C bis 100 °C

**Saugkorb mit Kunststoffgewinde**

Artikel Nr.	Typen Nr.	Gewinde	L mm	D mm	Maschenweite mm
134045	SKR-38-K	G 3/8	42,0	25,5	1,2
134046	SKR-12-K	G 1/2	47,0	29,5	1,2
134047	SKR-34-K	G 3/4	57,5	36,0	1,2
134048	SKR-1-K	G 1	69,0	43,5	1,2
134049	SKR-114-K	G 1 1/4	75,0	50,5	1,2
134050	SKR-112-K	G 1 1/2	83,0	56,5	1,2
134051	SKR-2-K	G 2	98,0	69,0	1,2
134052	SKR-212-K	G 2 1/2	123,0	86,0	2,0
134053	SKR-3-K	G 3	138,0	102,0	2,0



SKR-1-K